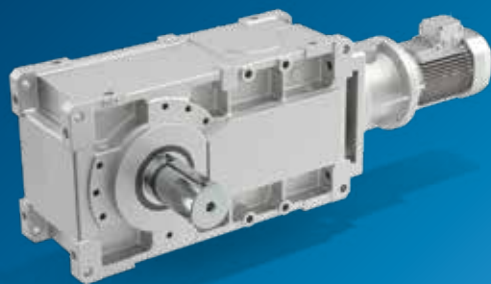


Helical Bevel Heavy Duty Gear Units



HDO Series

When high torque, robustness, reliability and long-operating life are required, Bonfiglioli's HDO Series is the best possible option. Thanks to high-quality materials and an optimized design, the HD Series can operate in the harshest environments, as well as in explosive atmospheres, with low maintenance costs and long service intervals. The HDO Series can also be fully customized thanks to an extremely broad portfolio of options and accessories.



ATEX GEARBOX AVAILABLE

Gear ratios

- 5.6 ... 490

Motors

- Input with solid shaft
- Input with e-motor coupling:
 - BN, BE, BX [IEC asynchronous]
 - BSR [IEC reluctance]

Motor options

- Thermistors and thermostat sensors
- Independent forced cooling
- Incremental, sin/cos absolute single/multi-turn encoders
- Tropicalization
- Anti-condensation heaters

Main options

- Fan cooling, cooling coil, oil heater
- External cooling unit
- Backstop
- Forced lubrication
- Temperature and oil level sensors
- Drywell
- Taconite seals
- ATEX certification for explosive environments

Key benefits

- Highly transmissible power
- Robustness
- Mounting flexibility
- Reliability
- Usable in explosive environments

Key features

- Spheroidal cast iron housing
- I/O shaft planarity and gearbox symmetry
- Wide range of options and accessories
- High design standards
- Atex - gearbox for explosive environments 2G/2D

Torque (Nm)

